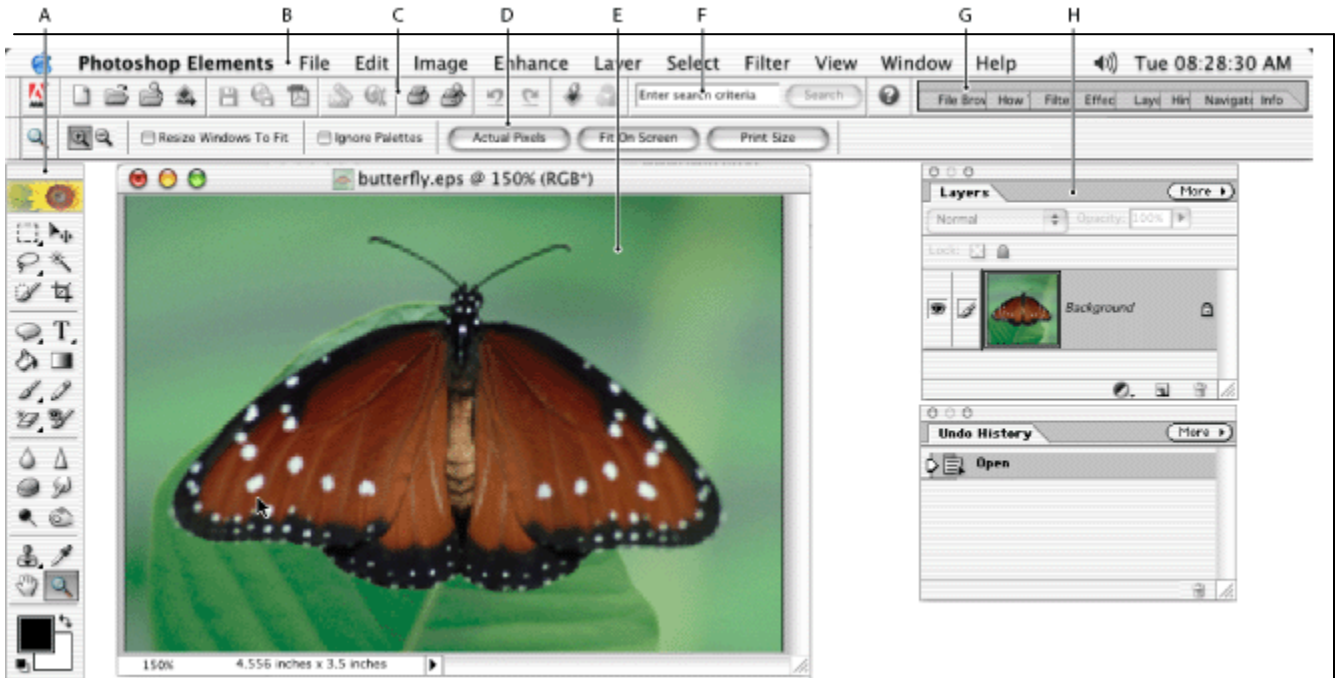




Adobe Photoshop elements¹

The Photoshop Elements work area is arranged to help you focus on creating and editing images. The work area consists of the following components:



A. Toolbox B. Menu bar C. Shortcuts bar D. Options bar
E. Active image area F. Search field G. Palette well H. Palettes

Menu bar - contains menus for performing tasks. The menus are organized by topic.

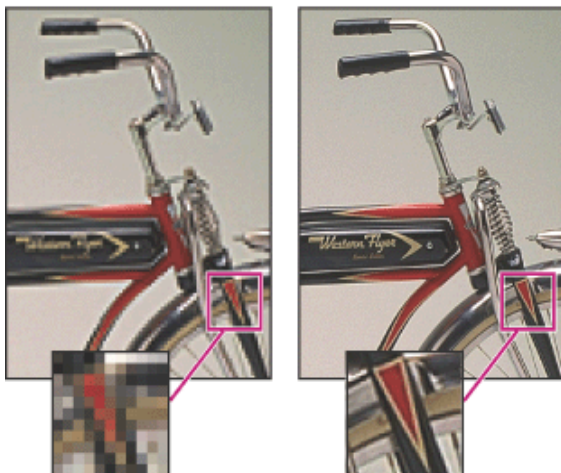
Shortcuts bar - displays buttons for executing common commands.

Options bar - provides options for using a tool.

Toolbox - holds tools for creating and editing images.

Palette well - helps you organize the palettes in your work area.

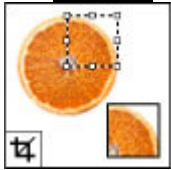
Palettes - help you monitor and modify images.



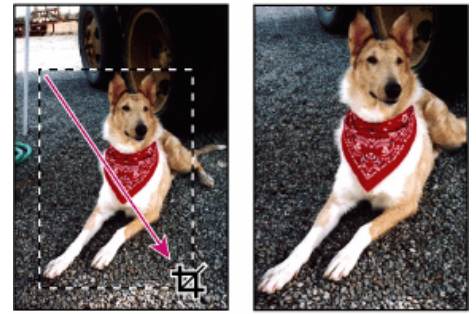
Same image printed at 72-ppi and 300-ppi; inset zoom 200%

- ❖ A picture is made up of many small blocky dots or **pixels**.
- ❖ The illustration on the left shows both look exactly the same. However the left picture is made up of 72 PPI (**Pixels per Inch**) and the right picture is made of 300 PPI. This is also called **Resolution**.
- ❖ *The higher the resolution of your image, the better the printed image quality.* Both look exactly the same, but when enlarged, one turns blocky and the other keeps the original quality.
- ❖ The more pixels an image contains, the more memory or space on your computer the picture will take up. Even though you will have an excellent picture, that can be enlarged, it will be hard to send it by email or even to save it on disk.

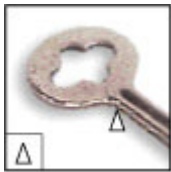
Tools



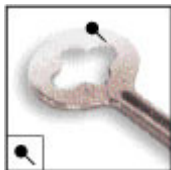
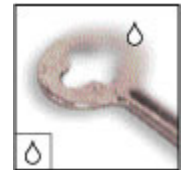
- ❖ **Crop** - Trims your image to focus on one area. The area inside the selection marquee is kept; the area outside the selection is deleted.



- ❖ **Red Eye Brush**-Removes the appearance of red eyes from people in photos with just a few clicks.



- ❖ **Blur tool**-Blurs hard edges when you drag over an area. **Sharpen tool**-Sharpens soft edges and increases clarity or focus when you drag over an area.
- ❖ **Sharpen tool** - soft edges and increases clarity or focus when you drag over an area.



- ❖ **Smudge tool**-Smudges colors in an image by picking up color where the stroke begins and pushing it in the direction you drag.

- ❖ **Dodge tool**-Lightens areas you drag over in an image



- ❖ **Burn tool**-Darkens areas you drag over in an image.



- ❖ **Clone stamp tool**-Creates a sample or a clone of an image.

- ❖ **Zoom tool**-Zooms in and out so you can magnify or reduce your view of an image.



Rotating an image turns it around its center point, while flipping an image inverts it across its horizontal or vertical axis.

- To rotate or flip an entire image:
- Choose **Image > Rotate**, and choose one of the following commands from the submenu:
 - 90° Left to rotate the image counterclockwise by a quarter-turn.
 - 90° Right to rotate the image clockwise by a quarter-turn.
 - 180° to rotate the image by a half-turn.
 - Custom to rotate the image by the angle you specify. If you choose this option, enter an angle between -359.99 and 359.99 in the angle text box, and then select Right or Left to rotate clockwise or counterclockwise. Click OK.
 - Flip Horizontal to flip the image horizontally.
 - Flip Vertical to flip the image vertically

