

## **PUBLIC NOTICE**

### **Regarding the National Endowment for the Humanities' Section 106 Review of Providence Public Library's Capital Improvements to the Library's Addition**

The National Endowment for the Humanities (NEH) has awarded Providence Public Library a grant to renovate the library's addition that was built in 1953. NEH is an independent grant-making agency of the United States government dedicated to supporting research, education, preservation, and public programs in the humanities. This public notice is issued as part of NEH's responsibilities under 36 C.F.R. Part 800, the regulations which implement Section 106 of the National Historic Preservation Act (NHPA) of 1966, as amended, 16 U.S.C. § 470. NEH, a funding agency, is required by regulation to identify and assess the effects of any proposed actions on historic properties. If any proposed action will have an adverse effect on historic resources, NEH works with the appropriate parties to seek ways to avoid, minimize, or mitigate any adverse effects. Additionally, the Section 106 regulations require NEH to consider the views of the public on preservation issues when making final decisions that affect historic properties.

In its grant application, Providence Public Library plans to renovate the 1953 addition to the library building, located at 150 Empire Street, Providence RI 02903. Providence Public Library has been identified as a historic property subject to Section 106 regulations. The grant application proposes to implement the following:

- Clean the limestone veneer of the addition's main block and re-point and repair the masonry as necessary.
- Install a new vestibule within the Empire Street entrance within the recessed granite surround, and add a glass canopy above the new entrance vestibule.
- Remove the existing mezzanines and construct new mezzanines in new locations. The new mezzanines will be held back from the glass by a few inches and covered with a break metal panel in a dark color.
- Change the existing street-level window that faces Washington Street into a storefront entrance.
- Add one new window to the rear elevation of the addition facing west toward the terrace of the original library building. The window opening will be filled with aluminum sash and will have a similar scale and fenestration pattern to the historic windows. On this same elevation, a new air intake louver will be added at a level close to the terrace and concealed behind the existing balustrade of the original library.
- Install lighting for the façade with low profile fixtures which wash the wall from the ledge at the third floor, with light fixtures recessed into the sidewalk, and fixtures set inside the granite window surrounds.
- Lower the height for the first-floor windows on the main block of the addition by approximately 24 inches, by removing the 3-foot-high granite panel below each window sill, cutting it down by 2/3 of its current size, and re-installing it.

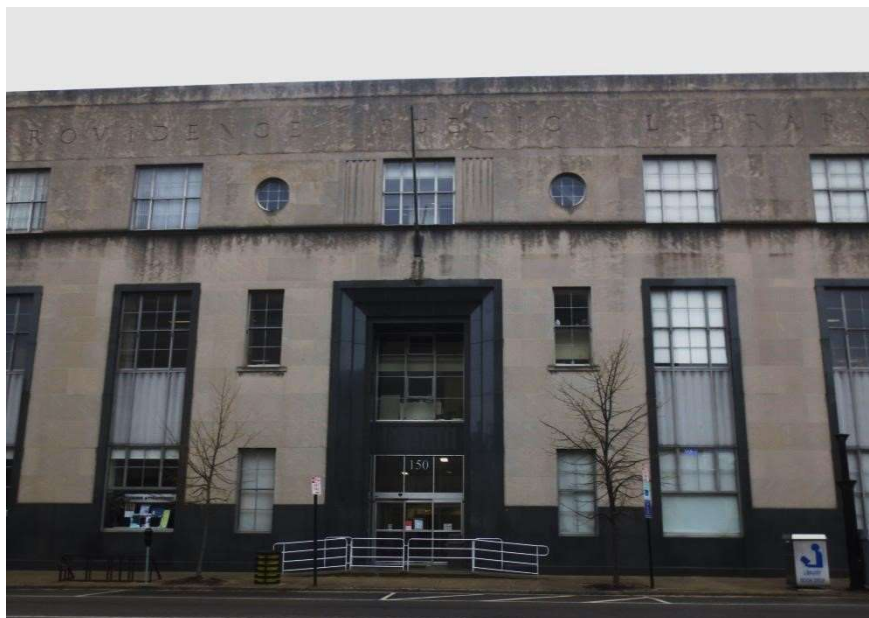
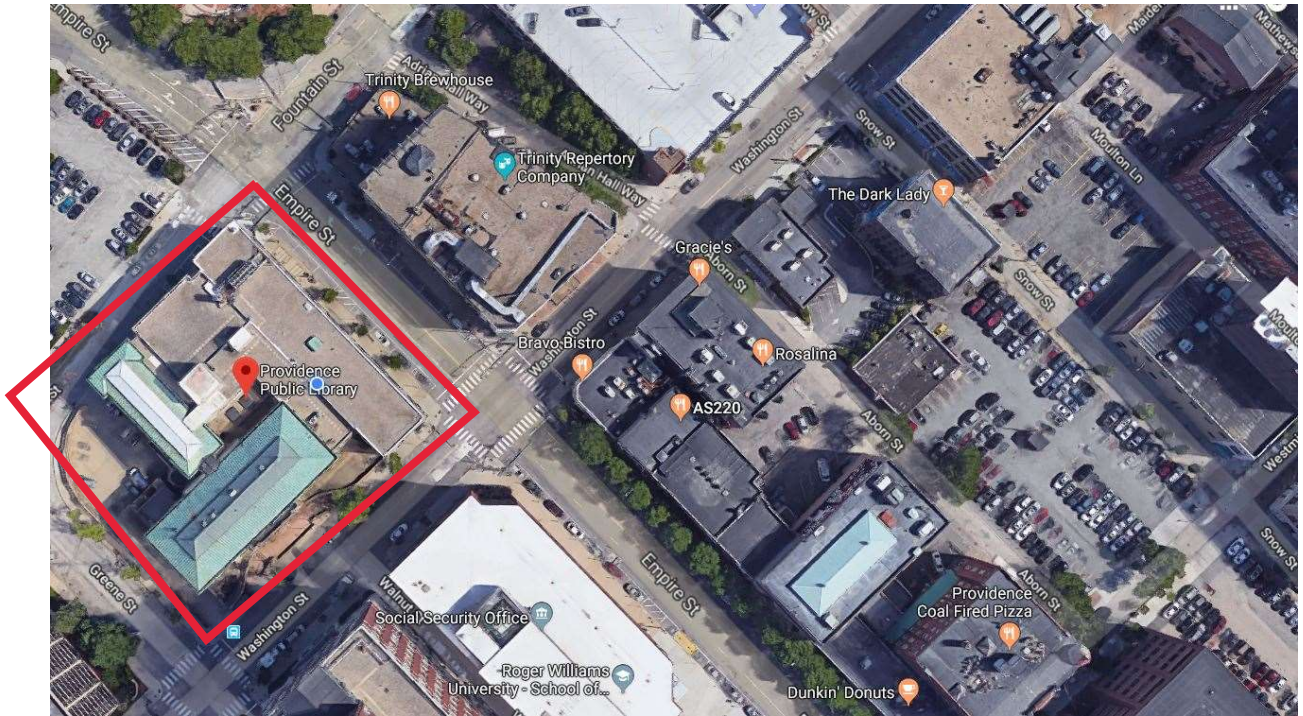
- Replacement of the original aluminum-sash windows with new aluminum windows that will approximate the originals in profile and general muntin pattern, and replacement of the existing metal spandrel panels that are located between the first- and second floors with new metal spandrels that will be narrower than the existing, thereby lowering the second-floor sills from an interior dimension of 64 inches to a more standard height. The new spandrels will replicate the ridged pattern on the existing spandrels.
- Replacement of the existing, deteriorated glass-block windows at the stacks block (on the north) with clear insulated glazing in order to improve the climate controlled environment for the stacks and special collections.

The Providence Public Library is listed in the National Register of Historic Places as part of the Downtown Providence Historic District. The original structure was built in 1900. The addition was built in 1952-54 and was designed by the Providence architectural firm of Howe, Prout & Ekman. The main block of the addition, which faces Empire Street, was executed in the Classical Moderne style and is sheathed in cut-limestone veneer, and accented with polished, black granite trim at the windows and entrance.

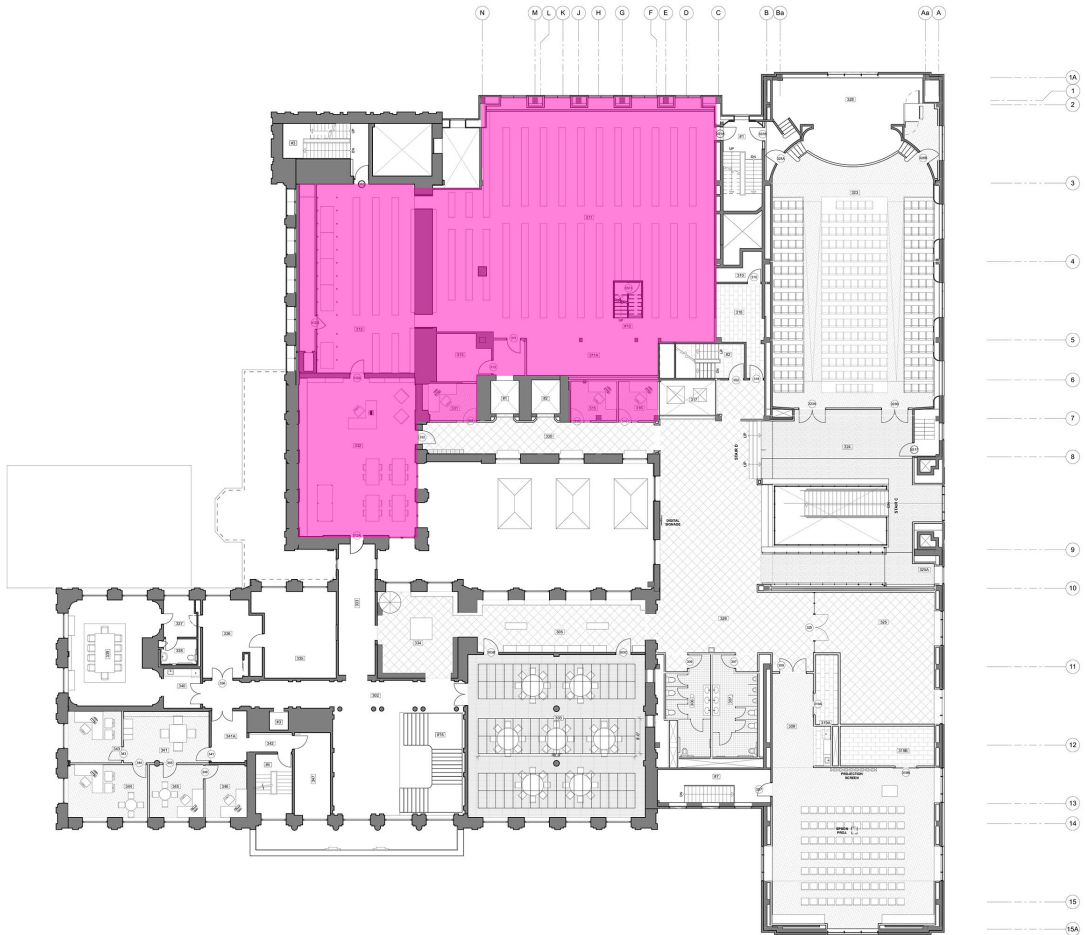
In a letter dated May 2, 2017, State of Rhode Island Historical Preservation and Heritage Commission Executive Director Edward Sanderson approved the renovation activities proposed above, pursuant to the Secretary of the Interior standards.

As required by Section 106, NEH is providing the public with information about this project, as well as an opportunity to comment on any knowledge of, or concerns with, historic properties in the proposed project area, and issues relating to the project's potential effects on historic properties. Comments may be submitted to the NEH by e-mail to [FPO@neh.gov](mailto:FPO@neh.gov), or to National Endowment for the Humanities, Division of Preservation and Access, 400 7<sup>th</sup> St SW, Floor 4, Washington, DC 20024. The deadline for submitting comments is **March 12, 2019**.

Building Location  
Providence Public Library  
150 Empire Street, Providence RI 02903



# Area of Potential Effect

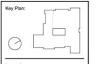


1 3 THIRD FLOOR FF&E PLAN  
SCALE: 1/8" = 1'-0"

Providence Public Library - Transformation  
193 Empire Street  
Providence, RI 02903

designLAB architects, inc.  
25 Cowardin Center Street, Suite 100  
Providence, RI 02903

Consultant:



Legend

Notes

NO.	REVISION	DATE

PROJECT NO. 13108  
DRAWN BY: DS, SB, MKG, JYK  
CHECKED BY: MKG  
DATE: JANUARY 12, 2016

Drawing Title:  
Third Floor FF&E  
Plan - REFERENCE  
ONLY

100% CONSTRUCTION DOCUMENTS