

PPL

Conservator Society

Kim Deacon Photo Collection of RI LGBTQ History is officially digitized

We are excited to announce that the Kim Deacon Collection photographs are now digitized and available to the public on provlb.digital.org!

Kim donated materials in 2021 to the RI LGBTQ+ Community Archives at Providence Public Library. Her collection documents the Kings & Queen Bar in Woonsocket, R.I. as well as the LGBT community in Rhode Island from the 1970s-early 2000s. Kings & Queens was a gay bar at 285 Front Street in Woonsocket in operation from 1977-2002. It was opened by Rita Paux (1922-2015) and operated by Kim Deacon (1951-) from that time until it closed in 2002.

The bulk of Kim's full collection includes photographs and videos, but additional clippings, event calendars and ephemera are also included. While over 650 photographs are now digitized, the other materials are available to be viewed at PPL. The images represent the bar as a gay social space and include events such as holiday parties, drag shows and fundraisers as well as events for the LGBT community sponsored by the bar including bi-annual picnics, roller skating nights and leagues for softball, bowling, flag football and darts. We are so excited to have her photographs described and available online for people to reminisce about their own time at K&Q with friends or to learn about LGBTQ local history.

If you have interest in donating your own collections to the RI LGBTQ+ Community Archives, please contact Kate Wells, Curator of Rhode Island Collections, at kwells@provlb.org. To view the online digital archives, please visit <http://provlb.digital.org/>.

EXHIBITION UPDATES

Rhode Island Creatives Show: Carl Jung Series

March 18 — May 10, regular PPL hours
Marble Staircase Community Gallery

Stand to Sea Prints by Allison Bianco

April 1 — June 30, regular PPL hours
Donald J. Farish Auditorium Lobby

Words from the Library! Prints by Amos Paul Kennedy, Jr.

April 1 — May 10, regular PPL hours*
Building-wide (including in the stacks!)
*Select prints available for purchase at gala

From Hold to Horizon Kei Soares Cobb and Becci Davis

April 6 — June 25, regular PPL hours**
Joan T. Boghossian Gallery

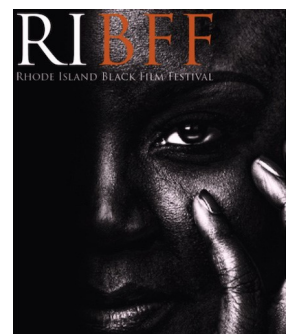
In the Stacks

UPCOMING EVENTS

7th Annual Rhode Island Black Film Festival: Black Culture in Film

Friday, April 5 | 10:00 am — 3:00 pm
Donald J. Farish Auditorium

Join us at PPL for the second day of the 7th Annual Rhode Island Black Film Festival! The Rhode Island Black Film Festival is an annual event that empowers Black artists and showcases a wide range of entertainment content made by and about people of African descent using the medium of film. An experience like no other, the festival brings together Black culture enthusiasts, executives, and content creators from around the country for four days of screenings, talk events, and networking. Enjoy a line-up of films in PPL's Donald Farish Auditorium. Look out for vendors and many more surprises.



The festival will take place April 4 - 7 in various locations. For more information, please visit RIBFF's website <https://ribff.org/>

Colin Channer's Console

Wednesday, April 17 | 5:00 — 6:30 pm
Mural Room

Celebrate National Poetry Month with us and Rhode Island Poet Laureate Colin Channer as he reads from his new book, *Console*, a finalist for a 2023 New England Book Award, and the second collection by Channer. This event is free and open to the public. Reservations are appreciated and seating is limited. Books will be for sale and signing, thanks to our friends at Barrington Books.



10th Anniversary of The Whale Guitar Celebration

Wednesday, April 24 | 5:00 — 6:30 pm
Donald J. Farish Auditorium

Join us in the Donald J. Farish Auditorium for an evening of music to commemorate the 10th Anniversary of The Whale Guitar Project, which was originally launched at PPL 10 years ago!



We'll share stories of its making (and PPL's role in its inspiration), as well as its meaning and journey — and the guitarists who have played it in the decade since, and we'll serenade the occasion by singing sea shanties along with Sharks Come Cruisin' Duo and other performers. Then follow the guitar on its parade down to the Rhode Island Room, where it will be installed into a case in the Rhode Island Room, to remain there on view, along with several iconic Nicholson Whaling Collection archival items that inspired it, until Friday, May 24!

** FROM HOLD TO HORIZON ARTIST ACTIVATION

We invite you to visit on scheduled activation days to experience a guided journey of the horizon and journaling as rituals of transformation led by the artists. For full schedule of activations, please visit the calendar page at <https://provlb.libcal.com/event/12300289>

This is a red button we WANT you to push! Located directly inside the Library's main entrance is our PPL Poem Printer. Come press the button and help us celebrate National Poetry Month



GREAT GRANTS

This year has been a big one for “PPL Grants Land,” so we want to take a moment and highlight some of our most recent awards! Some new, some returning, and some major increases to grants are noted below.

Andrade-Faxon Charities for Children

\$5,200 to support four cohorts of Young Creators, an enrichment program designed to nurture and inspire our next generation of creative thinkers, doers, and leaders through hands-on arts and technology activities tailored for 6 - 12 year-old youth.

BankRI

\$2,500 in continued support of our innovative Technology Career (TC) Pathway initiative. The TC Pathway provides youth and adults from diverse backgrounds with free, reliable, accessible education and workforce development programming.

Office of Library and Information Services of RI

\$3,500 to expand our books on CD collection to benefit all ESOL patrons and students. There have been a number of studies performed that have shown reading and listening simultaneously is an effective strategy to learn language. Building this collection of Spanish and English language audio materials would increase our capacity to provide resources for our community members and program participants, dovetailing nicely with the existing support we offer.

Centreville Bank

\$20,000 (the largest grant we have ever received from them!) for our Teen Squad. Now in their eighth year, Teen Squads incorporate key success factors for teen programming: interest-driven subject matter, project-based learning, collaboration with community mentors, and engagement with schools. This learning model centers youth creative agency and 21st Century Skills development through engaging programs so that teens are equipped with the necessary skills to forge a career pathway by entering higher education or the workforce.

Rhode Island Council for the Humanities

\$12,000 to support Programs and Exhibitions as we present a series of participatory events over a period of several months to consider the sea as a dynamic space of ungovernability, constant motion, and unfixable indeterminacy, and investigate how this state of fluidity has made it a generative space of literal and metaphorical transformation, dissolution, washing away, and even renewal.

Did You Know . . .

Thomas Morton's *New English Canaan* is considered to be the first banned book in our nation's history. In fact, with the ban taking place in 1637, this censorship was taking place more than a century before the Declaration of Independence was even written! Morton's book was banned by the Puritan government on the basis of its heretical critique of Puritan customs, particularly those customs of structures of power.

STAFF PROFILE

Owen Cuseo

Hi! My name is Owen, and I am the new Maker's Space Coordinator here at PPL. Previously, I worked at FabNewport as the Community Adventure Specialist, helping connect students with folks in the community who were experts in their fields. I had never worked with kids much before here, but it has turned out to be the best part of the job. Comparing their development with your own growth really helps you understand the learning process. I am excited to bring my experience to the Library team.

Growing up in Providence, our family had a computer room with a computer so large, the cat could sleep on top of it. My family isn't full of the most tech-savvy people, so we had the cheapest Dell money could buy. Because the computer was on the low-end of tech, I was always forced to find workarounds, and I think that's ultimately what “making” is about — using the tools you have at your disposal and creating something new. This mindset is really handy, especially in a public library, where we have to learn how to use the things we already have.

When the opportunity to work here at PPL came around, I was so excited! It is such an amazing space and I run into people I know, or meet new people, all the time. Getting to work in the community and teach (and learn!) new skills was something I just had to say yes to. It is so rewarding because I get to see the kids grow up. I've been affiliated with PPL for three years now, so I've seen kids who started in high school start to go on and look at colleges. I'm finally at the age where I get to watch other people grow up, and that feels like a real privilege to me. Plus, being walking distance to my favorite lunch (chicken sandwich and seasoned fries at Tori Tomu) isn't bad either...

Outside of work, I spend every moment I can outside. I like to walk in the woods, around 10 miles a day whenever possible. I enjoy making videos about the natural world, and am currently enrolled at URI for environmental education. I have two years left. One day, I would like to teach in a non-formal place like a national park or a zoo. I appreciate the non-traditional methods of learning, and would like to continue to play a role in kids' educational development. It seems like every few years I have a major change in consciousness as far as my career goes, but education has always been at the forefront for me. Nature journalism, working outside, teaching people about the interconnectedness of it all, that's what it's about for me.

I can't think of any other place with this many resources or people who are willing, and enthusiastically able, to connect you with what you need, whether it be a new book or specific services. For where we are, we have everything you could want. It is a great stepping stone to learning new things, but it is also just an amazing hub of knowledge.

The Library is so accessible and provides so much to our community because it is available to everyone.